

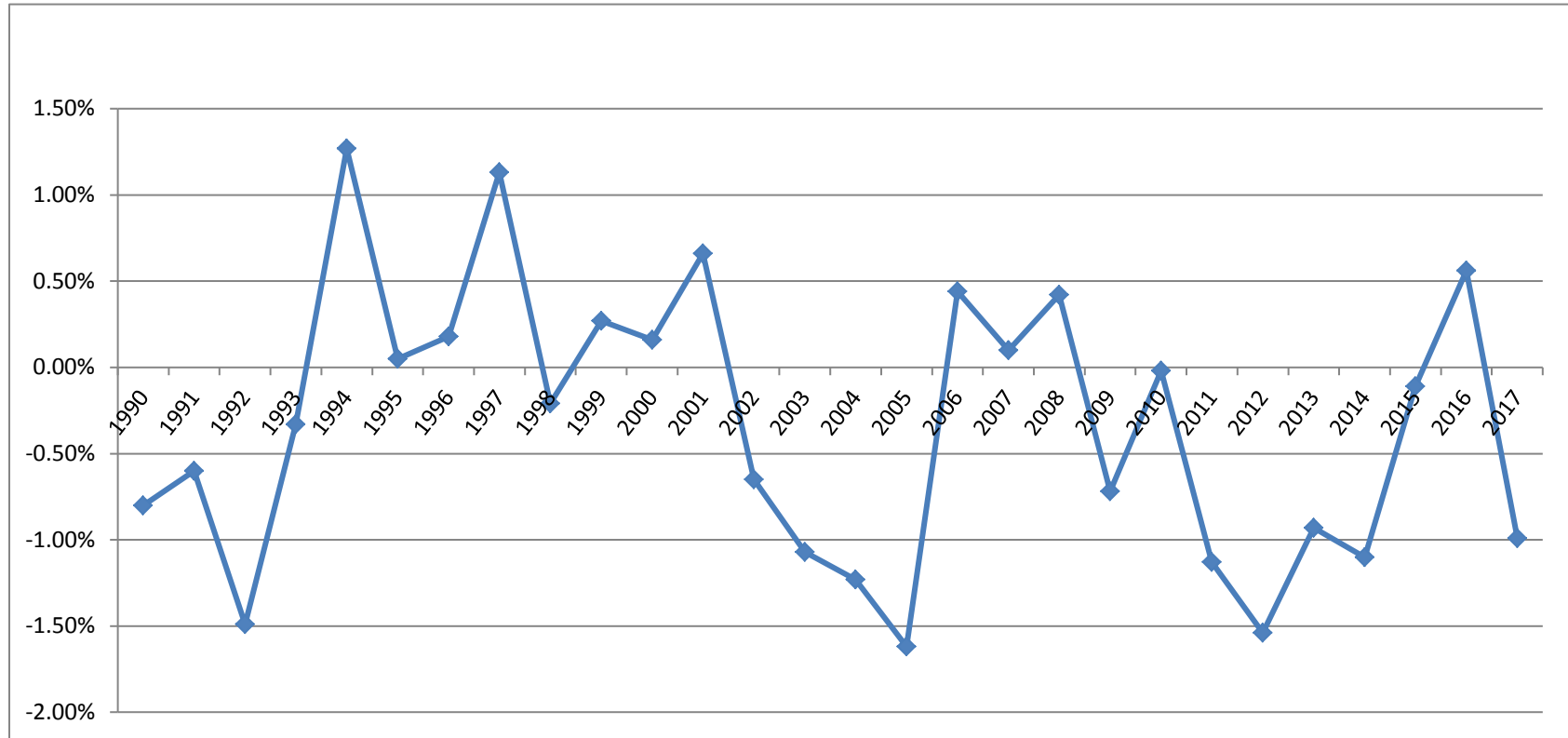
Federal Medical Assistance Percentages (FMAPs)

- ▶ The FMAP is the share of state Medicaid benefit costs paid by the federal government.
- ▶ Pursuant to federal law, the Secretary of the U.S. Dept. of Health and Human Services calculates the FMAPs each year.
- ▶ The FMAP is calculated based on a three-year average of state per capita personal income compared to the national average.
- ▶ No state can receive less than 50% or more than 83%.
- ▶ States also receive "enhanced FMAPs" for expansion populations under the ACA and for the *Childrens Health Insurance Program (CHIP)*.

VERMONT FMAP (based on Federal Fiscal Year)

| Year | Federal Share | State Share | Difference |
|------|---------------|-------------|------------|
| 1990 | 62.77% | 37.23% | |
| 1991 | 61.97% | 38.03% | -0.80% |
| 1992 | 61.37% | 38.63% | -0.60% |
| 1993 | 59.88% | 40.12% | -1.49% |
| 1994 | 59.55% | 40.45% | -0.33% |
| 1995 | 60.82% | 39.18% | 1.27% |
| 1996 | 60.87% | 39.13% | 0.05% |
| 1997 | 61.05% | 38.95% | 0.18% |
| 1998 | 62.18% | 37.82% | 1.13% |
| 1999 | 61.97% | 38.03% | -0.21% |
| 2000 | 62.24% | 37.76% | 0.27% |
| 2001 | 62.40% | 37.60% | 0.16% |
| 2002 | 63.06% | 36.94% | 0.66% |
| 2003 | 62.41% | 37.59% | -0.65% |
| 2004 | 61.34% | 38.66% | -1.07% |
| 2005 | 60.11% | 39.89% | -1.23% |
| 2006 | 58.49% | 41.51% | -1.62% |
| 2007 | 58.93% | 41.07% | 0.44% |
| 2008 | 59.03% | 40.97% | 0.10% |
| 2009 | 59.45% | 40.55% | 0.42% |
| 2010 | 58.73% | 41.27% | -0.72% |
| 2011 | 58.71% | 41.29% | -0.02% |
| 2012 | 57.58% | 42.42% | -1.13% |
| 2013 | 56.04% | 43.96% | -1.54% |
| 2014 | 55.11% | 44.89% | -0.93% |
| 2015 | 54.01% | 45.99% | -1.10% |
| 2016 | 53.90% | 46.10% | -0.11% |
| 2017 | 54.46% | 45.54% | 0.56% |
| 2018 | 53.47% | 46.53% | -0.99% |

FMAP Percentage Change Federal Fiscal Years 1991-2018



COMPARISON OF FMAPs - Selected States (FFY 2018)

New England States

CT, NH, MA = 50%
 RI = 51.45% ↑
 Vermont = 53.47% ↓
 Maine = 64.34% ↓

Highest FMAP

Mississippi (74.17%) ↑
 New Mexico (72.16%) ↑
 South Carolina (71.58%) ↑
 Alabama (71.44%) ↑

Lowest FMAP (50% FMAP)

Alaska
 California
 Colorado ↓
 Connecticut
 Maryland
 Massachusetts
 Minnesota
 New Hampshire
 New Jersey
 New York
 North Dakota
 Virginia
 Washington
 Wyoming

↑ = Increased from previous year
 ↓ = Decreased from previous year

█ = Years where FMAP decreased from previous year

ACA = Affordable Care Act

JFO DRAFT Updated 12/23/2016

FMAP - State Fiscal Years 2000 - 2018 with Enhancements

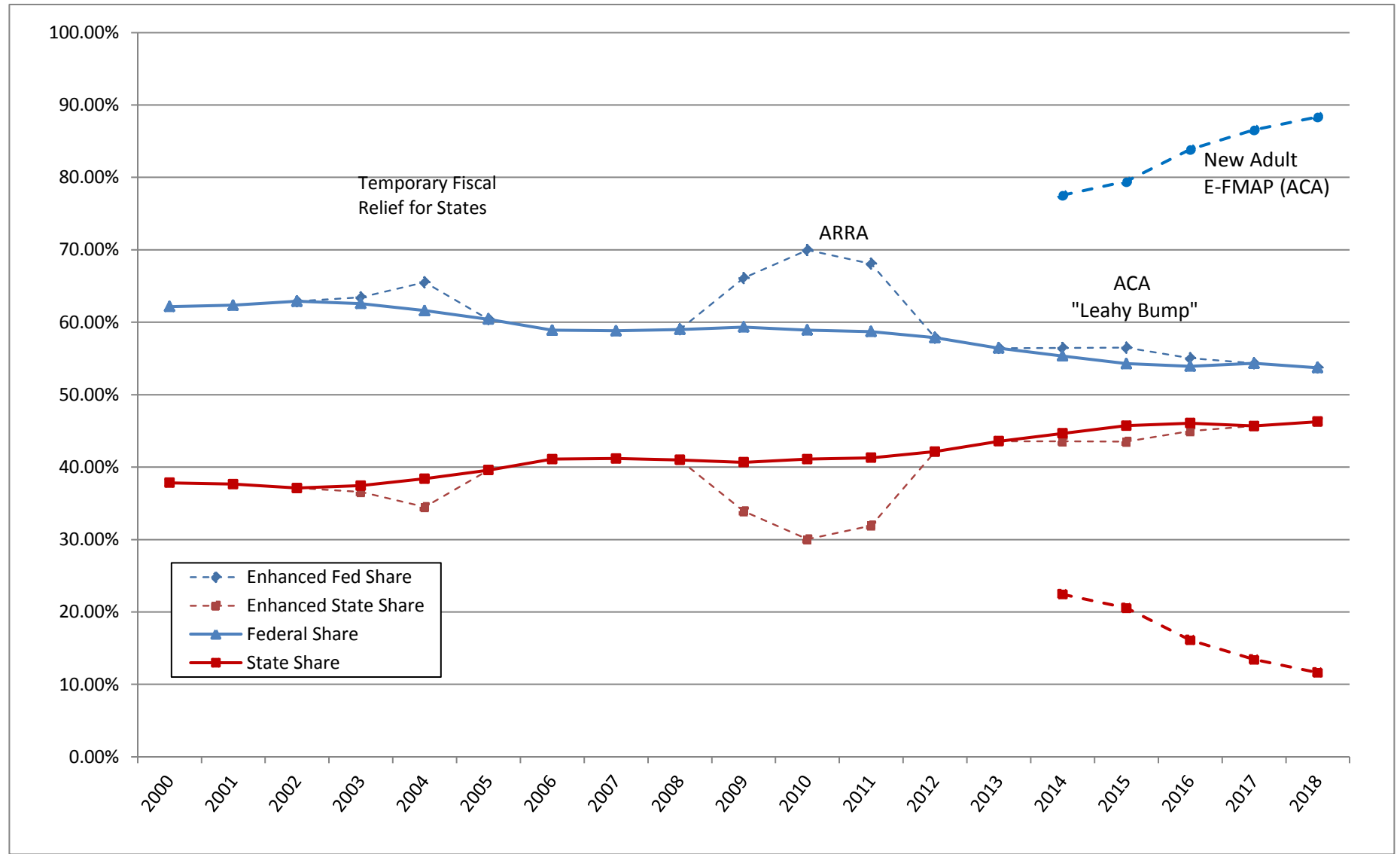
State Fiscal Year
(as used in state budget)

| Year | State Share |
|-------------|---------------|
| 1991 | 37.83% |
| 1992 | 38.48% |
| 1993 | 39.75% |
| 1994 | 40.37% |
| 1995 | 39.50% |
| 1996 | 39.14% |
| 1997 | 39.00% |
| 1998 | 38.10% |
| 1999 | 37.98% |
| 2000 | 37.83% |
| 2001 | 37.64% |
| 2002 | 37.11% |
| 2003 | 36.57% |
| 2004 | 34.48% |
| 2005 | 39.58% |
| 2006 | 41.11% |
| 2007 | 41.18% |
| 2008 | 41.00% |
| 2009 | 33.90% |
| 2010 | 30.04% |
| 2011 | 31.93% |
| 2012 | 42.14% |
| 2013 | 43.58% |
| 2014 | 43.56% |
| 2015 | 43.51% |
| 2016 | 44.97% |
| 2017 | 45.68% |
| 2018 | 46.28% |

Temporary fiscal relief to states

ARRA

Affordable Care Act (ACA)
"Leahy Bump"



Vermont receives enhanced FMAP (E-FMAP) for two Medicaid Eligibility Groups (MEGs):

1) New Adult (childless) - as part of the Affordable Care Act

- SFY17 E-FMAP = 86.57% (federal share) / 13.43% (state share)
- SFY18 E-FMAP = 88.37% (federal share) / 11.63% (state share)
- Applied to Medicaid eligible expenditures for approximately 40,000 adults.

2) Children's Health Insurance Program (CHIP, formerly known as SCHIP)

- SFY17 E-FMAP = 91.02% (federal share) / 8.98% (state share)
- SFY18 E-FMAP = 90.60% (federal share) / 9.40% (state share)
- Applied to Medicaid eligible expenditures for approximately 5,000 low-income children.

☐ = Years where state received enhancements to FMAP

ARRA = American Recovery & Reinvestment Act
ACA = Affordable Care Act

JFO DRAFT Updated 12/23/2016