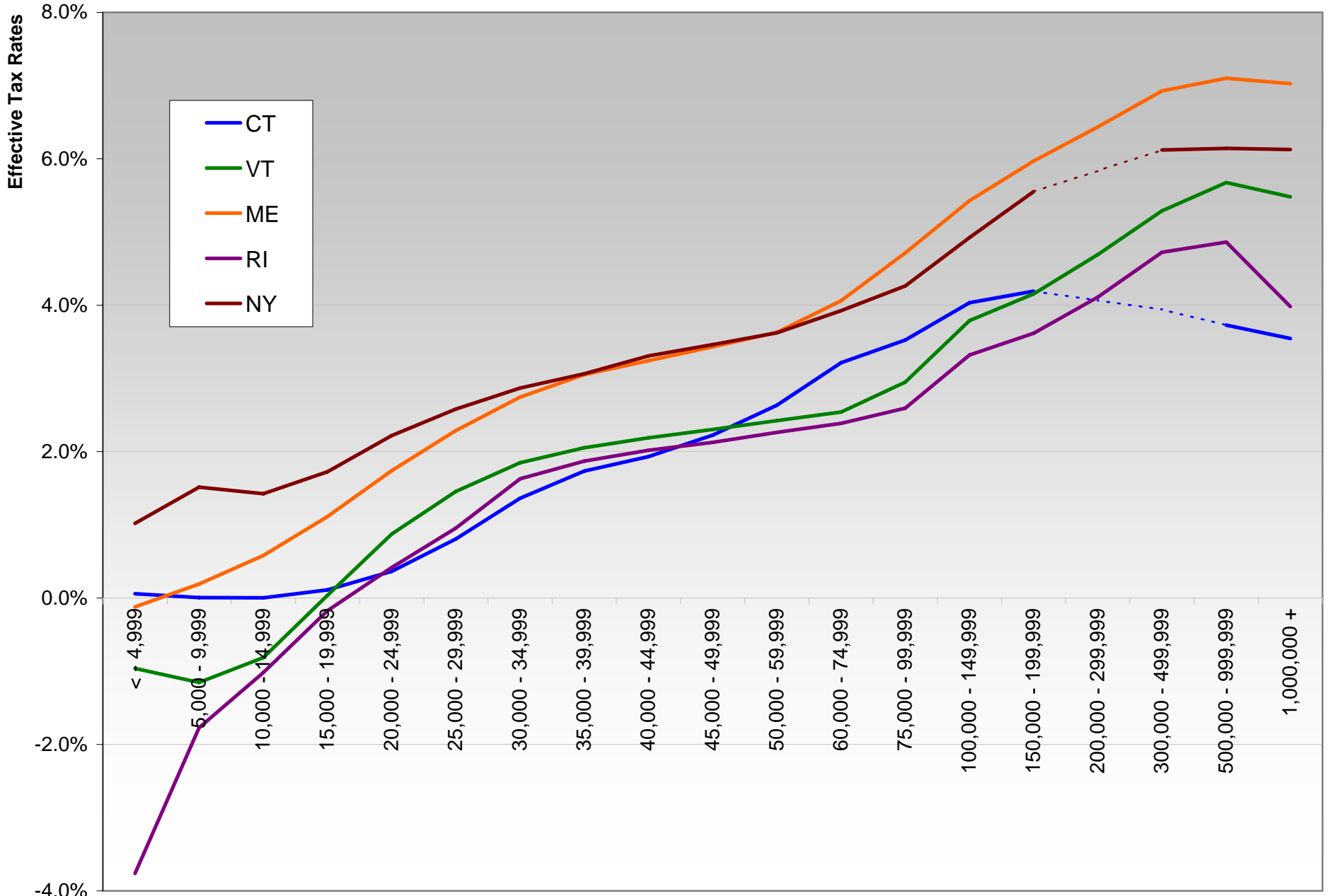
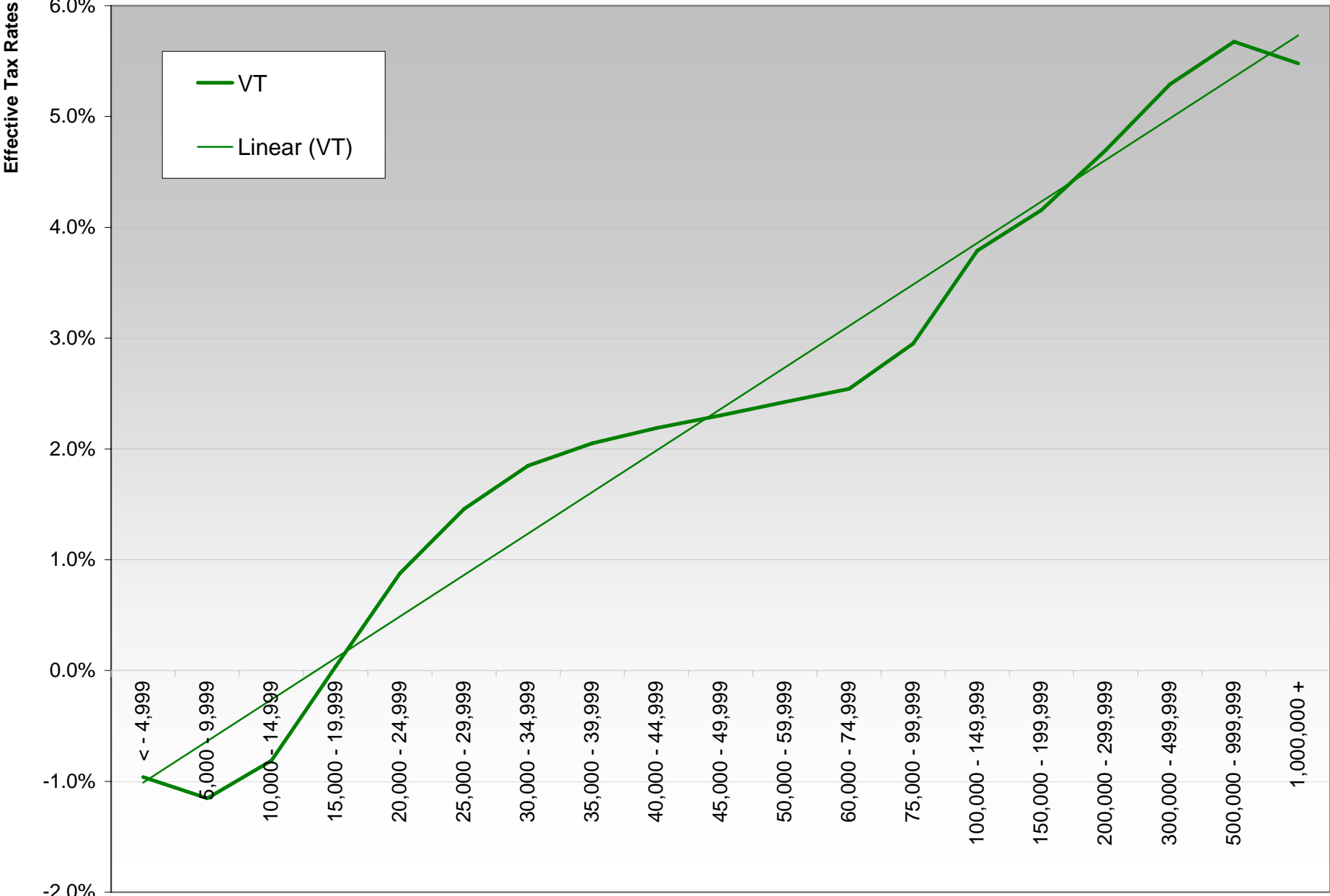


Effective Rate Comparison - Personal Income Tax



Notes: All data are TY2006 except RI which is TY2007
 NY is based on NY AGI not federal AGI
 Dotted lines indicate imputed data

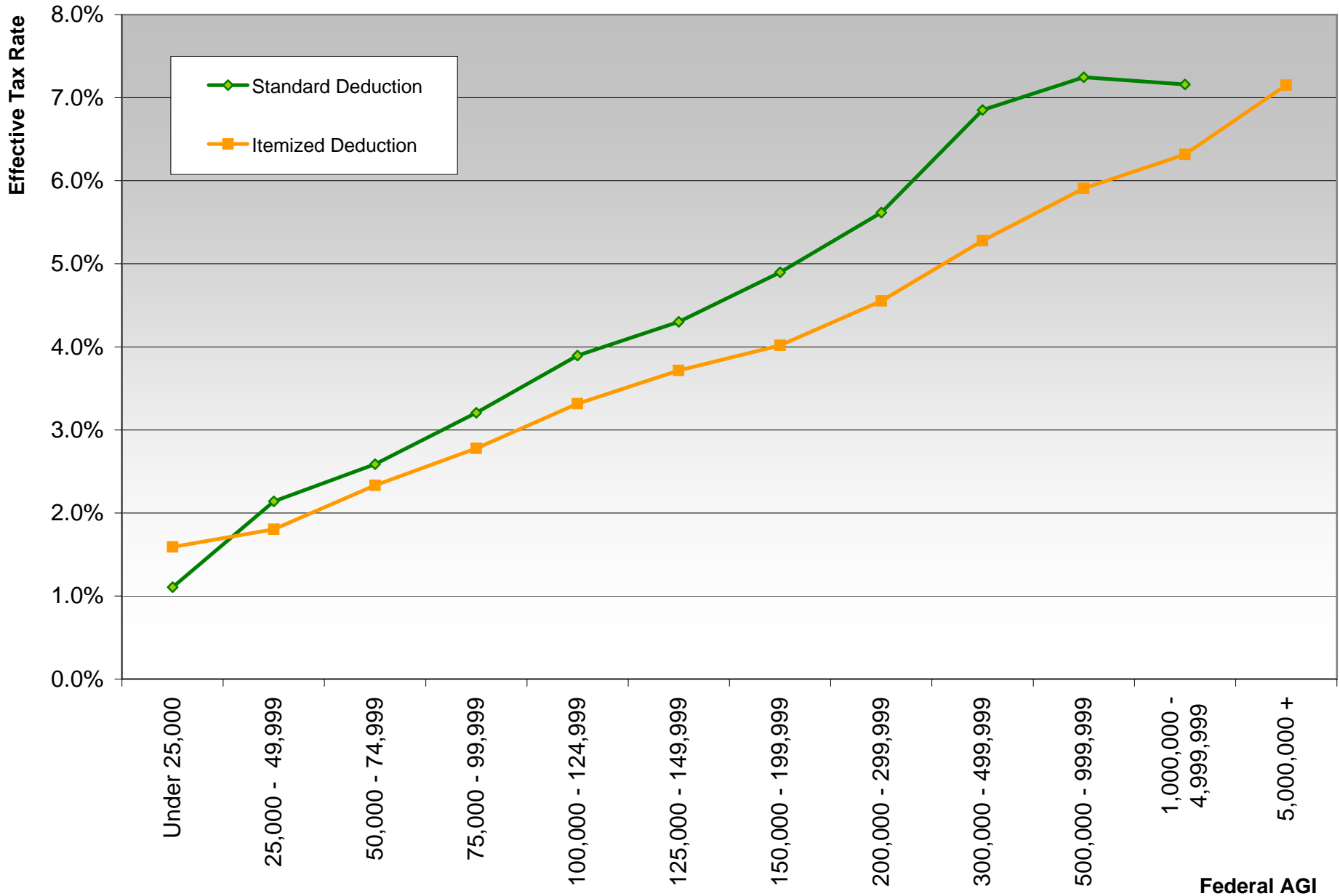
Vermont Personal Income Tax Effective Rates



Federal AGI

Prepared by JFO/st

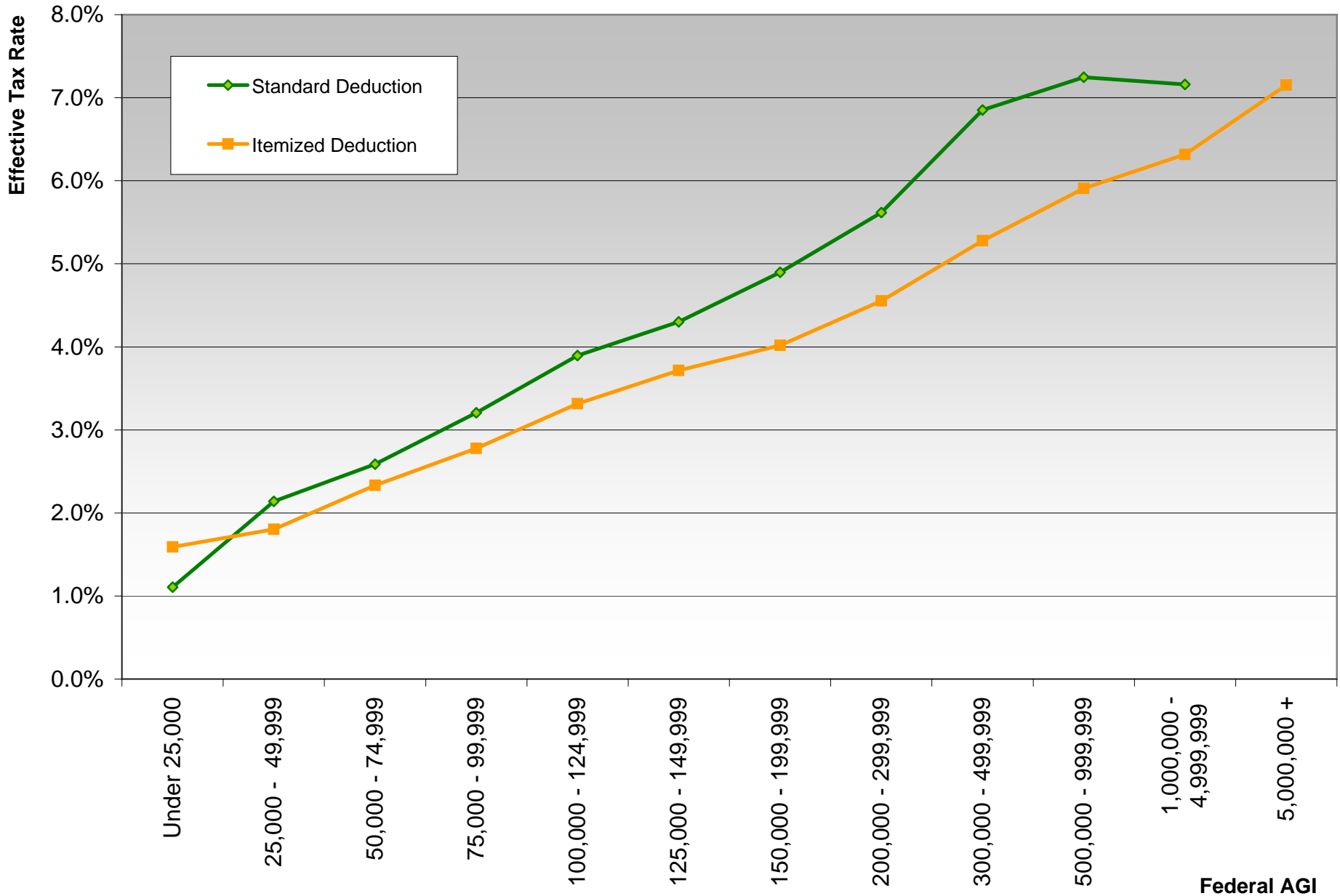
Vermont Resident Taxpayers TY2006



Note: No taxpayers with AGI of \$5 million or more take the standard deduction.

Prepared by JFO

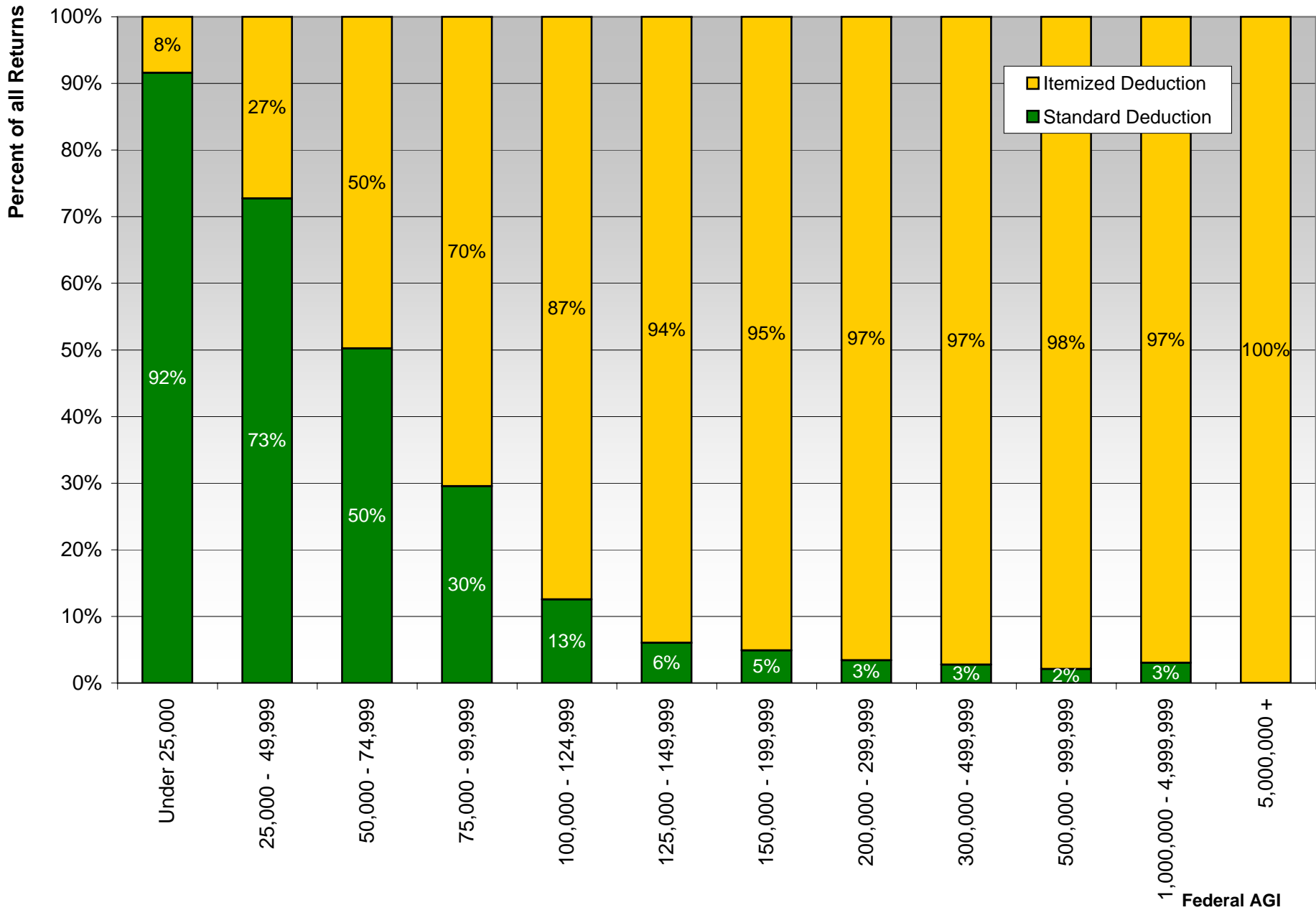
Vermont Resident Taxpayers TY2006



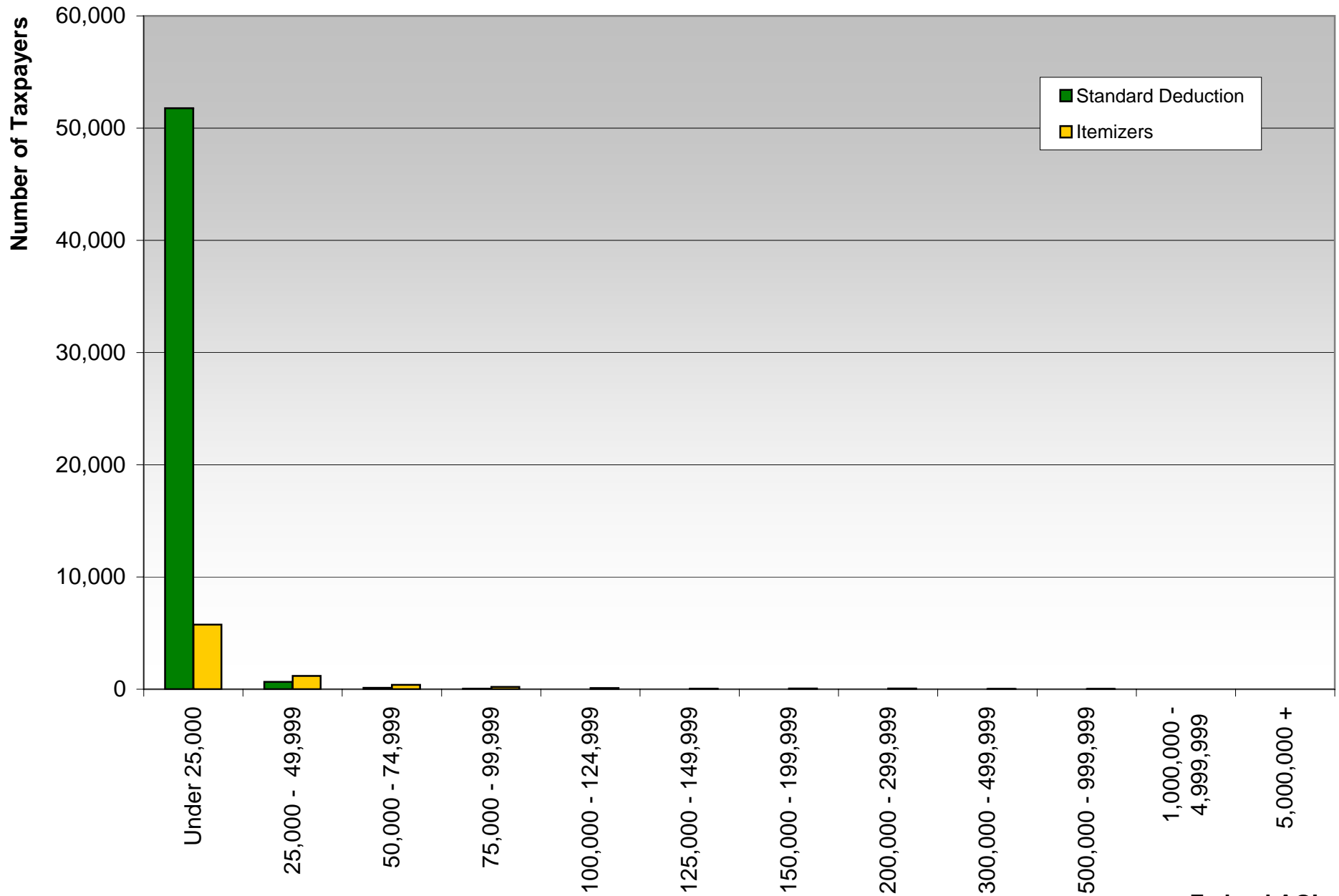
Note: No taxpayers with AGI of \$5 million or more take the standard deduction.

Prepared by JFO

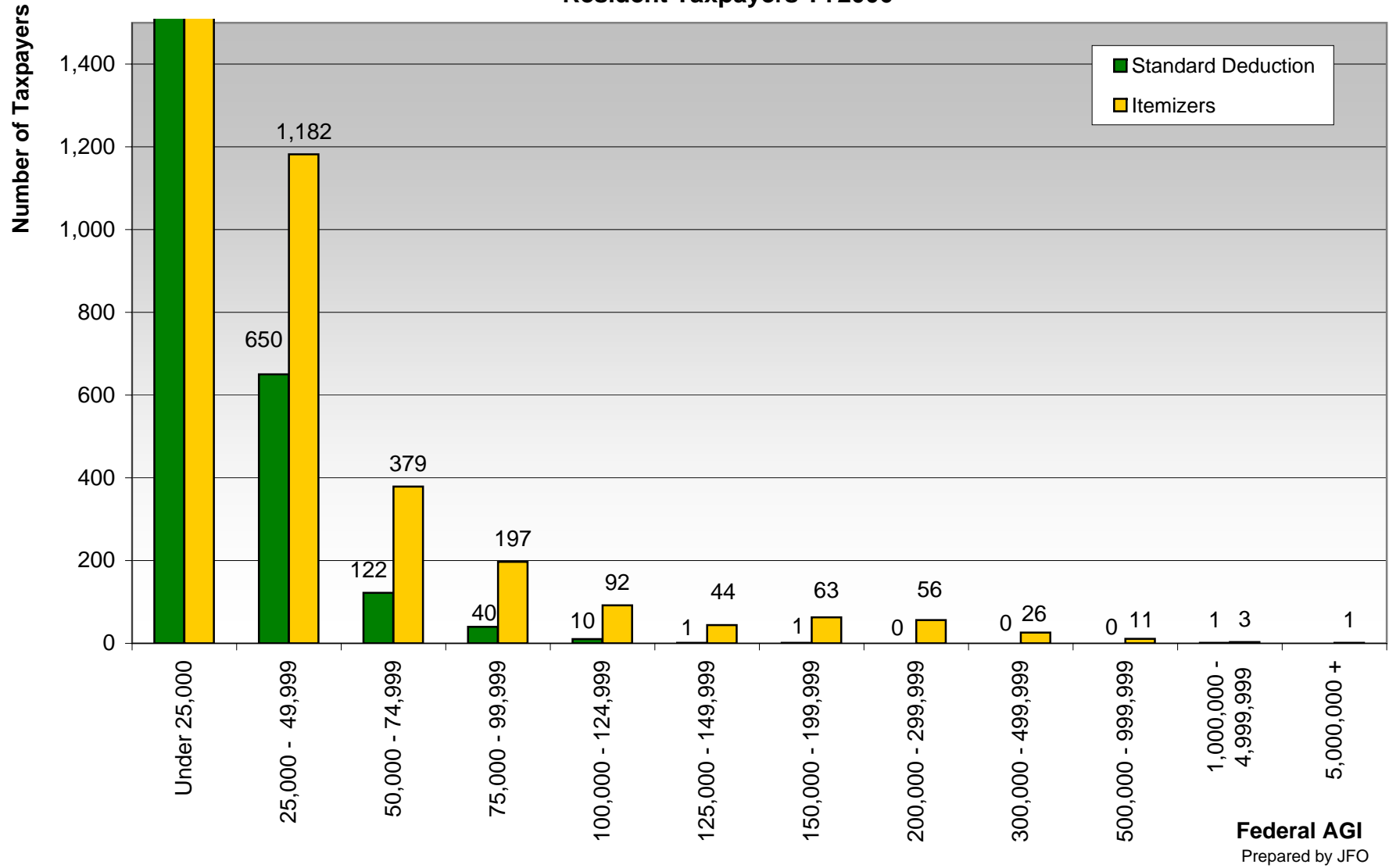
Vermont Tax Returns TY 2006



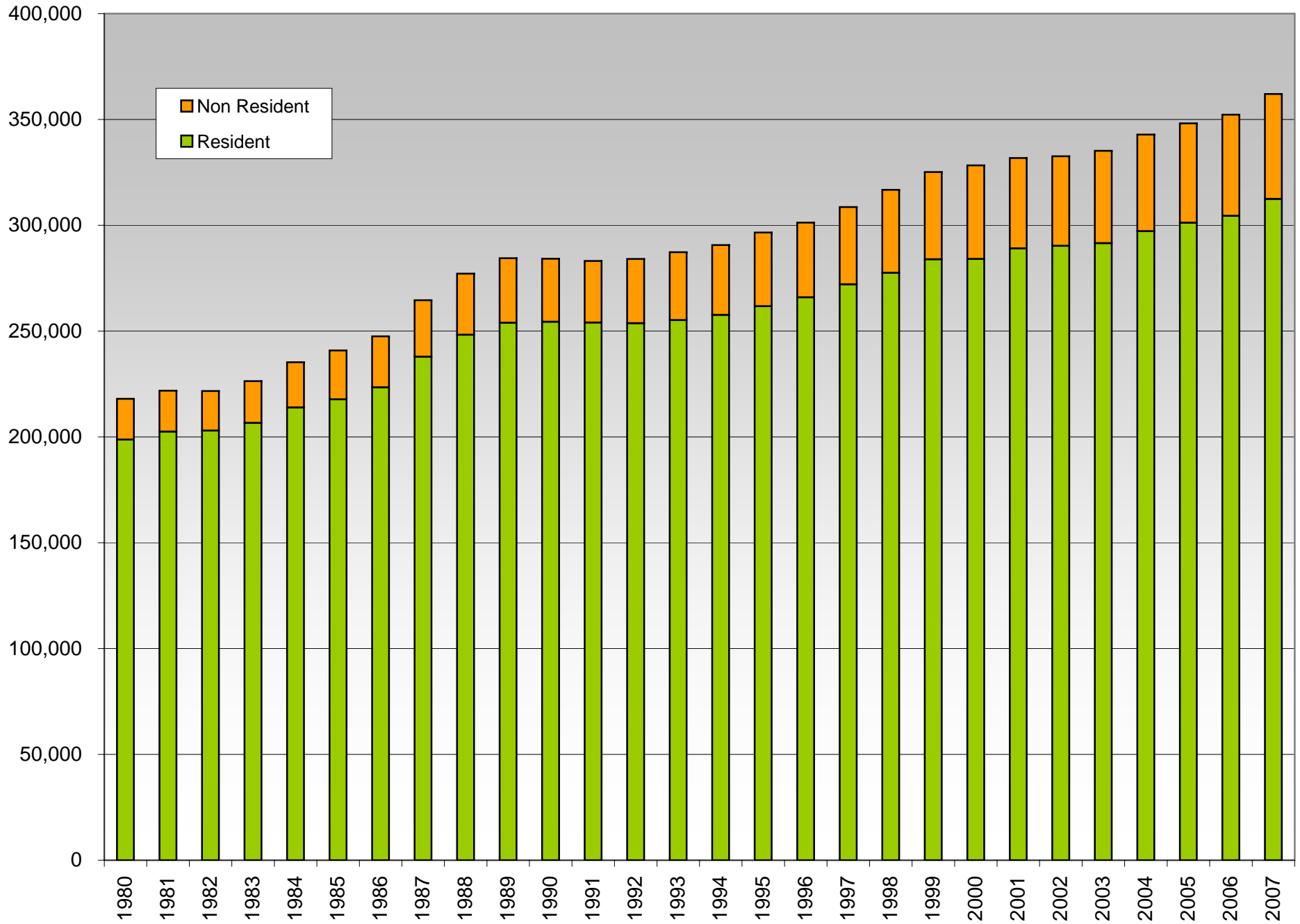
**Zero Tax Returns (Scale 1)
Resident Taxpayers TY 2006**



**Zero Tax Returns (Scale 2)
Resident Taxpayers TY2006**



Number of Vermont Taxpayers



Number of Vermont Taxpayers

